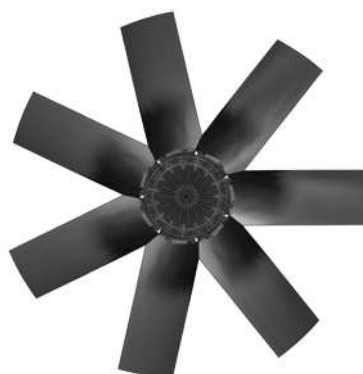


Movement by Perfection



The Royal League in **ventilation**, control and drive technology



Product documentation

Type
FC091-SDS.7Q.V7

Article number
209589

Product documentation

Customer

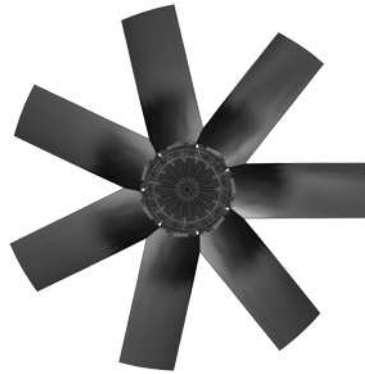
ZIEHL-ABEGG Contact

Project

ZIEHL-ABEGG Subsidiary
Czech Republic
ZIEHL-ABEGG s.r.o.
Škrobárenská 484/8
617 00 BRNO
Czech REPUBLIC
Phone +420 5 45421690
Fax +420 5 45421699
www.ziehl-abegg.cz
sales@ziehl-abegg.cz

Type
FC091-SDS.7Q.V7

Article number
209589



Contents

| | | |
|----|------------------------------|---|
| 1. | Product specification | 3 |
| 2. | Characteristic Curve | 4 |
| 3. | Drawing | 5 |
| 4. | Connection diagram | 6 |
| 5. | EU-Declaration of conformity | 7 |

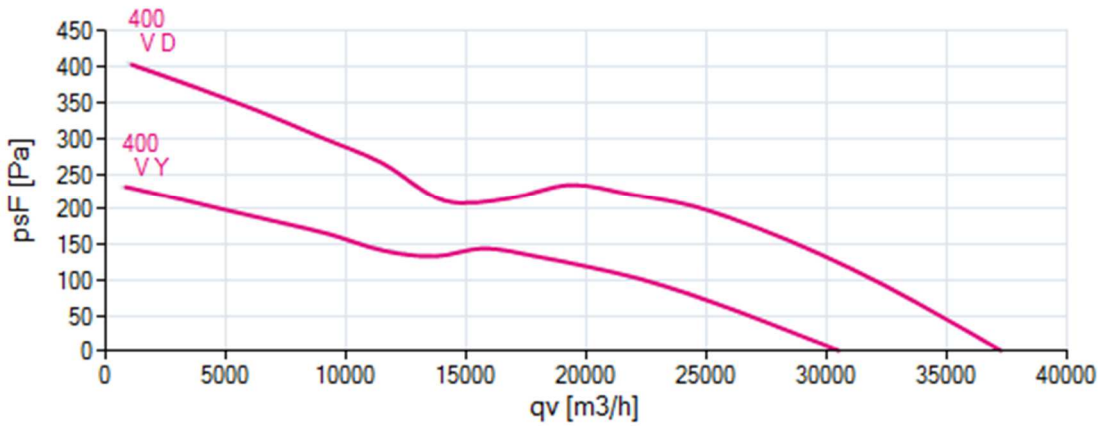
1. Product specification

Technical data

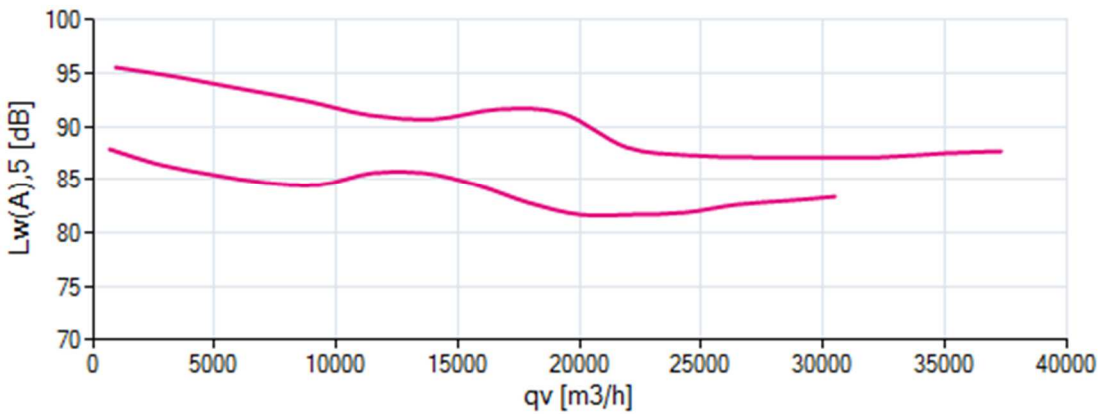
| | |
|--------------------------------------|--|
| Article number | 209589 |
| Type | FC091-SDS.7Q.V7 |
| Designation | Axial fan with diecast blades |
| Rated values | 3~400V±10% D/Y 50Hz P ₁ 3.60/2.50kW 7.20/ 4.30A ΔI=5% 890/ 700/min COSY 0,72 60°C |
| Electrical connection | Terminal box K07 |
| Min. operating temperature °C | -40 |
| Mounting type terminal box | Mounted on Stator |
| Type of protection | IP54 |
| Thermal class | THCL155 |
| Connection diagram | 1360-108XA |
| Rating plate | 1x fixed |
| Fitting position | H/Vu/Vo |
| Motor protection | thermal contact |
| Impregnation | Moisture and hot climate protection |
| Quality of bearings | ball bearing with long-time lubrication |
| Material Rotor | Aluminium |
| Painting rotor | Rotor 1 coat painted |
| colour rotor | RAL 9005 (jet black) |
| Material blades | Aluminium |
| Painting impeller | 1 coat painted |
| Colour blades | RAL 9005 (jet black) |
| Painting mot.suspens | Motor suspension 1 coat paint |
| colour suspension | RAL 9005 (jet black) |
| Weight kg | 53,05 |
| ErP Data | Efficiency η_{statA} : 38.3 % Efficiency: $N_{actual} = 41.2 / N_{target} = 40^*$ *ErP 2015 |

2. Characteristic Curve

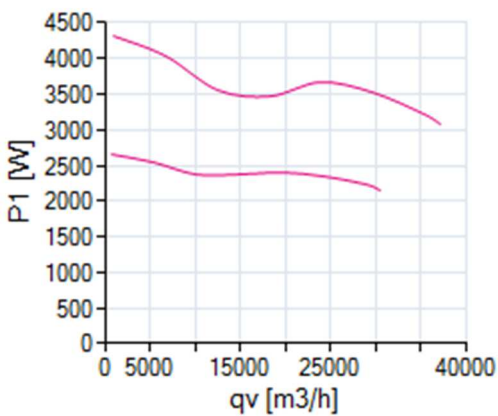
Air performance



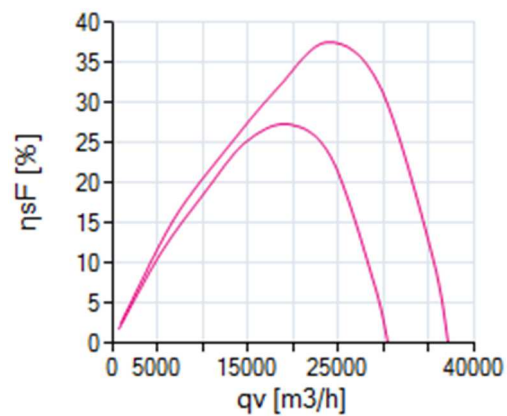
Acoustics



Power input



Efficiency

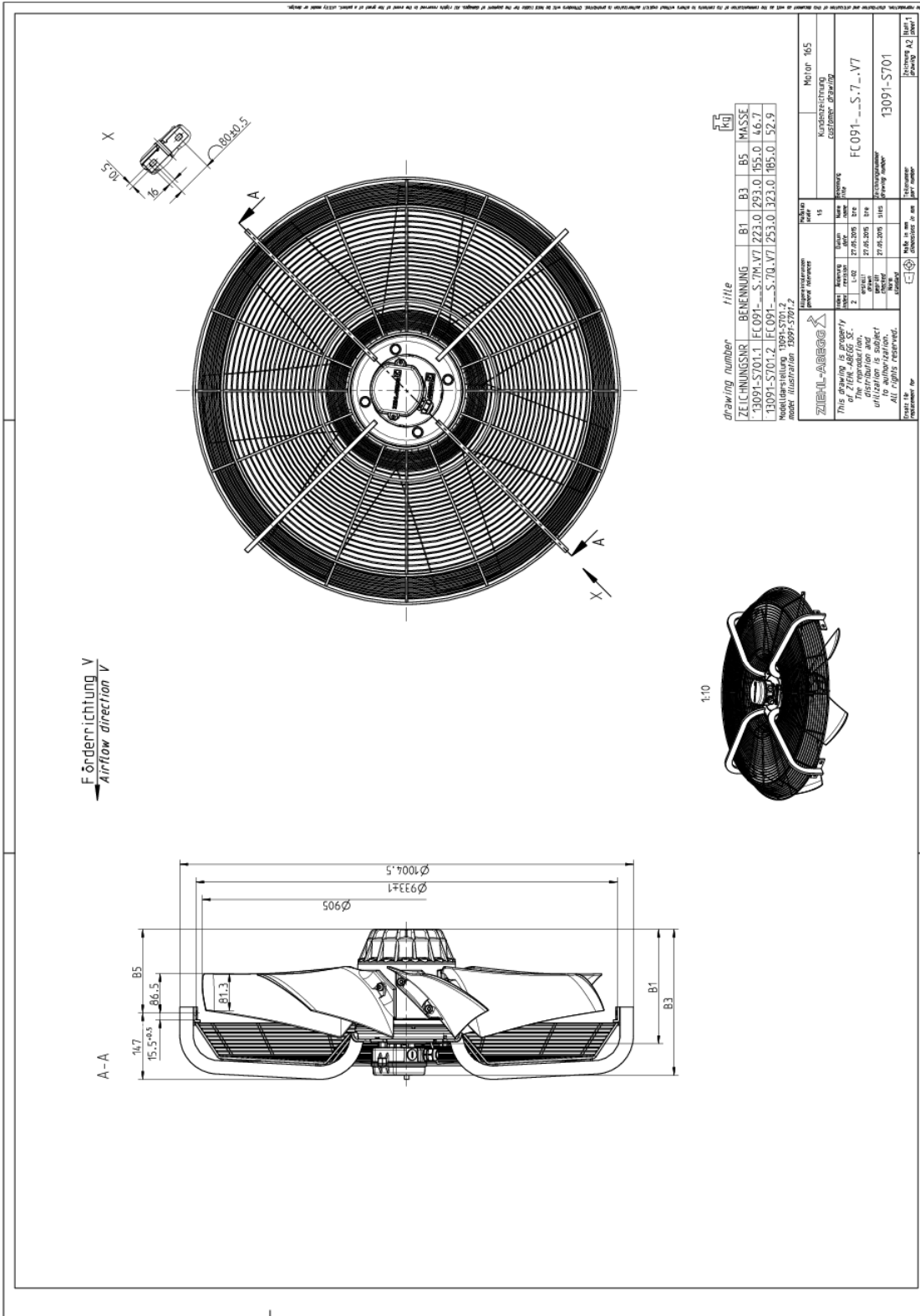


měřeno v plném hrdle bez mřížky, instalace typ A podle ISO 5801

Please note: It's not allowed to use this fan in the stall area!*

*In doubt please ask your responsible ZIEHL-ABEGG sales contact.

3. Drawing



Dimensions in mm

Shown drawing is just to show the dimensions of the fan.

www.ziehl-abegg.com
9.2.2017 14:20:11

Movement by Perfection | Bewegung durch Perfektion

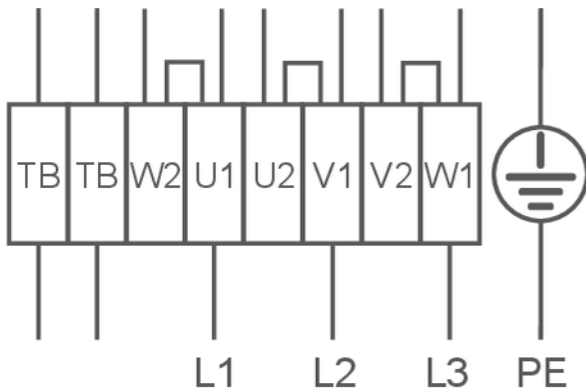
4. Connection diagram

1360-108XA

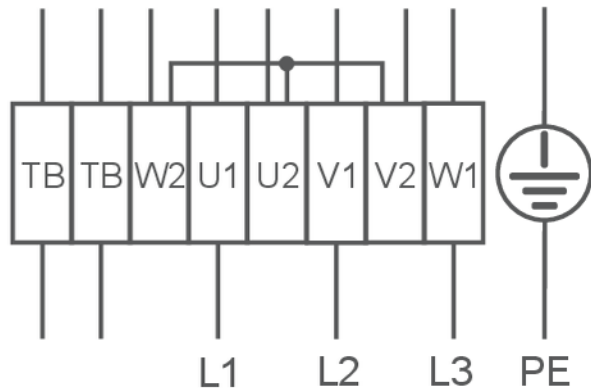
3~ motor, 2 speeds (Δ/Y switch over) with thermostatic switch (if built in). Without bridge when using speed change-over switch.

| | |
|----|--------|
| U1 | brown |
| V1 | blue |
| W1 | black |
| U2 | red |
| V2 | grey |
| W2 | orange |
| TB | white |

High speed/D-connection



Low speed/Y-connection



5. EU-Declaration of conformity

EC-Declaration of conformity

- Translation -
(english)
ZA75-GB 1616 Index 011
00285644-GB

Manufacturer: ZIEHL-ABEGG SE
Heinz-Ziehl-Straße
74653 Künzelsau
Germany

The manufacturer is solely responsible for issuance of the declaration of conformity.

The products:

- External rotor motor MK..., MW..
- Axial fan FA..., FB..., FC..., FE..., FF..., FS..., FT..., FH..., FL..., FN..., FV..., DN..., VR..., VN..., ZC..., ZF..., ZN..
- Centrifugal fan RA..., RD..., RE..., RF..., RG..., RH..., RK..., RM..., RR..., RZ..., GR..., ER..
- Cross-flow fan QK..., QR..., QT..., QG..

The engine type:

- Asynchronous internal or external rotor motor
- Asynchronous internal or external rotor motor with integrated frequency inverter, except EDP system
- Electronically commutated (EC) internal or external rotor motor
- Electronically commutated internal or external rotor motor with integrated EC Controller, except EDP system

These products comply with the following EU directives:

- EMC Directive 2014/30/EU
- Low voltage directive 2014/35/EU
- ErP Directive 2009/125/EC, in conjunction with Regulation (EU) no. 327/2011

The following harmonized standards are in use:

EN 60034-1:2010 + Cor.:2010 EN 61000-6-3:2007 + A1:2011 + AC:2012
EN 60204-1:2006 + A1:2009 + AC:2010 EN 61000-6-2:2005 + AC:2005
EN 60529:1991 + A1:2000 + A2:2013

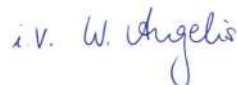
Compliance with the ErP Directive 2009/125/EC does not refer to external rotor motors MK..., MW..

All ErP-relevant information comprises measurements which are determined using a standardised measurement set-up. More details can be obtained from the manufacturer.

Compliance with the EMC Directive 2014/30 / EU refers only to those products when they are connected by mounting / operating instructions . If these products are integrated into a system or supplemented with other components (eg. sensing controls) and operated , the manufacturer or operator is responsible of the overall system for compliance with the EMC Directive 2014/30 / EU .

Künzelsau, 20.04.2016
(Location, date of issue)

ZIEHL-ABEGG SE
Dr. W. Angelis
Technical Director Air Movement Division
(Name, Function)



(Signature)

ZIEHL-ABEGG 



The Royal League in ventilation, control and drive technology

Intelligent control technology for any application

ZIEHL-ABEGG system capabilities:
Everything from a single source – perfectly matched for optimal performance

Please contact us. We would be pleased to design an individual solution for your requirements.

We would like to welcome you on our worldwide exhibitions. Please find our next exhibitions [here](#).